

Waterfront

Sines



ZACHODNIOPOMORSKI UNIWERSYTET TECHNOLOGICZNY W SZCZECINIE/ZUT [Polónia](#)
| TECHNISCHE UNIVERSITEIT EINDHOVEN [Holanda](#) | HAFEN CITY UNIVERSITY HAMBURG
[Alemanha](#) | ARISTOTELE UNIVERSITY OF THESSALONIKI – FACULTY OF ENGINEERING
– SCHOOL OF ARCHITECTURE [Grécia](#) | UNIVERSITE DE PARIS LA SORBONNE [França](#)
| POLITECNICO DI MILANO – FACOLTA DI ARCHITETTURA E SOCIETA DIAP –
DIPARTIMENTO DI ARCHITETTURA E PIANIFICAZIONE [Italia](#) | GAZI UNIVERSITESI [Turquia](#)

Waterfront Urban Design

Title

**Waterfront Urban Design
(EWWUD)**

Coordinator

Pedro Ressano Garcia

Organizing committee

**Bernardo Vaz Pinto
Margarida Valla**

Students committee

**Ana Brás
Carlos Vinagre
Daniela Silva
Gonçalo Casqueiro
João Banha
Marta Dias
Miguel Sousa**

Editorial coordination

**Daniela Silva
Pedro Ressano Garcia**

Design & layout

Itemzero

Graphic logo

Carlos Vinagre

Publication date

2013

Permalink

ewwud.ulusofona.pt

Keywords

**Waterfront Regeneration, Port Cities,
Urban Design, Sines**

Impressão e Acabamento

Clássica - Artes Gráficas, S.A.

Depósito Legal

362864/13

ISBN

978-989-8512-64-2

**Todos os direitos reservados
Edições Universitárias Lusófonas
Campo Grande, 376 – 1749 – 024 Lisboa
edicoes.lusofonas@ulusofona.pt**

Organizers



LABART
• • • • •
UNIVERSIDADE LUSÓFONA



**This publication contains the results
of the European Workshop on
Waterfront Urban Design – EWWUD 2012**



Sponsor



Partners



The workshop has much to thank. At the time of publishing the results of EWWUD I should start by saying that this book is only possible because of the enthusiasm of all who have supported the event in so many different ways. It all begun with the grant from the ERASMUS program that covered most of the expenses, secondly the availability of the extraordinary team of international professors coming to Lisbon and Portuguese teachers that succeed to leave their busy professional lives and work passionately with each group. And at last, or first of all, the Universidade Lusófona that turned this project real.

The workshop requires the energy of a crowd. It is an extraordinary group of people, nearly one hundred that work hard. They travel miles to be in Lisbon, have little sleep and produce extraordinary material that we publish in this book.

The support from Public Entities exceeded all expectations. Port Authority of Sines and all the technical personal from Sines municipality contributed widely with material and internal information - Architect Ricardo Pereira and Lidia Sequeira. At Universidade Lusófona the International Relations, Career & Entrepreneurship Office carried out all the difficult administrative procedures, that is not an easy job and they succeed beautifully. Joel Hasse Ferreira and Sub-Director if ISCAD Jorge Gregório hosted the group. The administrator of Universidade Lusófona, José Manuel Damásio carefully handled the project and solved a number of difficulties that the project, being pioneer, necessarily demands.

The participation of invited professors raised the level of scientific expertise thanks to Zbigniew Paszkowski, Jakub Golebiewski, Irene Curulli, Maarten Willems, Dirk Schubert, Timothy Pape, Renée Tribble, Alkmini Paka, Nikos Kalogirou, Anastasia Tzaka, Nur Caglar, Adnan Aksu, Françoise Py, Andrea Colombo, Marco Oriani, Johannes Kalvelage. From Universidade Lusófona professors Luís Santiago Baptista, Margarida Valla, Maria João Matos, Bernardo Vaz Pinto, Filipe Afonso, António Louro and Pedro Pinto contaminated the group with their enthusiasm and challenged their thoughts. The group students of the organization made the event possible, without them it would not have happened, they brought a refreshing and energetic approach thanks to Carlos Vinagre Martins, Daniela Silva, Gonçalo Casqueiro, Miguel Sousa, Ana Brás, Marta Dias and João Banha.

Pedro Ressano Garcia

Coordinator of European Workshop
on Waterfront Urban Design 2012

9	<i>Introduction</i> Waterfront New Life		
13	<i>Paper</i> Waterfront revitalisation from local to regional perspectives in Hamburg and Barcelona	53	<i>Paper</i> Waterfronts: The power of transformation in a Sustainable World
23	<i>Paper</i> The City of Sines Barrier Transitions	57	<i>Team Project</i> Port of Sines Human, Environment, Industry
27	<i>Team Project</i> Sines Barrier Transitions	69	<i>Team Project</i> Sines Establishing Symbiosis
39	<i>Paper</i> Living Wall	79	<i>Paper</i> Land to Sea Eco Path
41	<i>Team Project</i> Sines Living Wall	85	<i>Team Project</i> Santo André Land to Sea
		97	<i>Team Project</i> Healthy Santo André
		107	<i>Paper</i> Lagoons' Promenade
		109	<i>Paper</i> The Zipper
		113	<i>Team Project</i> Inbetween Lagoons' Promenade
		125	<i>Team Project</i> The Zipper
		135	<i>Team Project</i> Inbetween From a Bird's Eye View
		147	<i>Conclusion</i> Waterfront New Life Seven ideas to challenge the Port City
		149	Final Boards

Team Project

Teachers

Adnan Aksu

Nur Caglar

Students

Agata Czapkiewicz

Amna Alruheili

André Jacob

Chiara Giussani

Despoina Thomaïdou

Ezgi Basar

Felicity Passmore

Norbert Olczyk

Pedro Alves

The Zipper



Unspoilt and prosperous natural environment that we want to preserve

Very large area with different urban and rural characteristics
(sea - sand - rocks - dunes - lagoon - forest - city)

Dual character of the area:

- A place of contradictions;
- A combination of industrial and natural character.

So what would fit all?

Container

- Temporary
- Easy-to-move
- Modularity
- Simple design
- Industrial

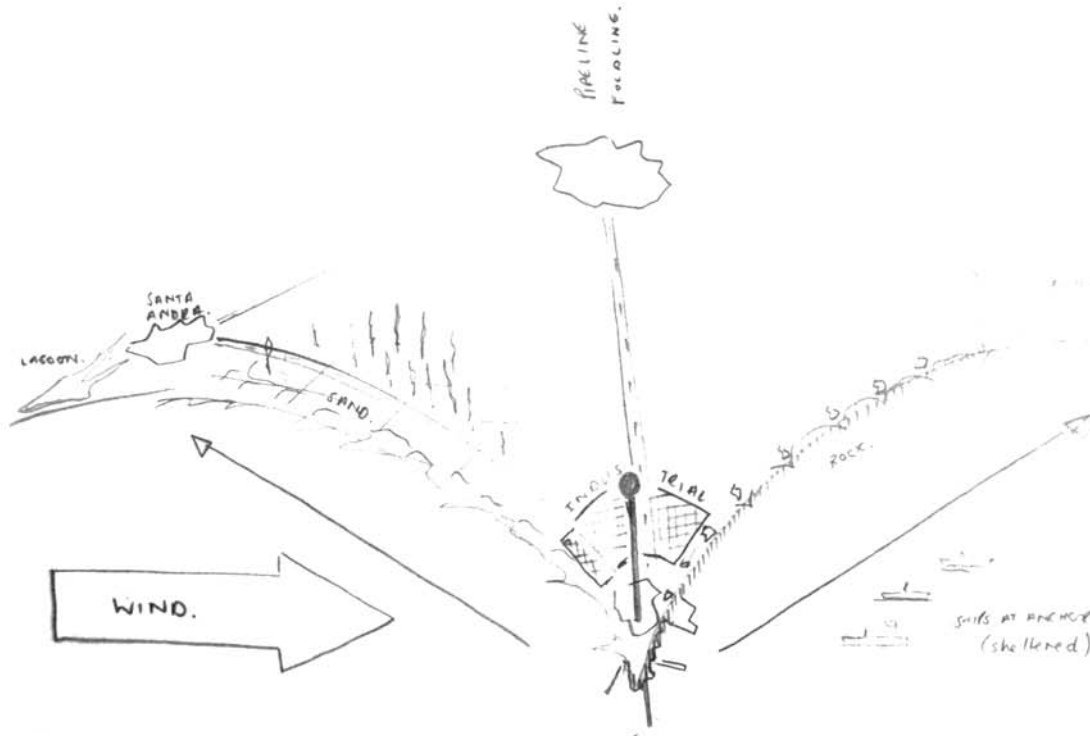
Displacing content

The contents of the inbetween are moved by a set number of modules to be amongst some of the other content.

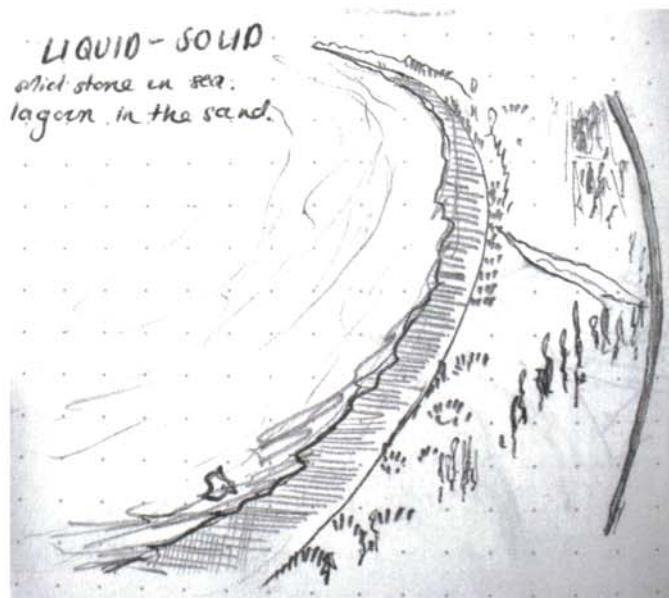
Running in a line from the road into the sea to pick up on all the different contents.

Temporary in their strength of appearance, eventually they run into one another.

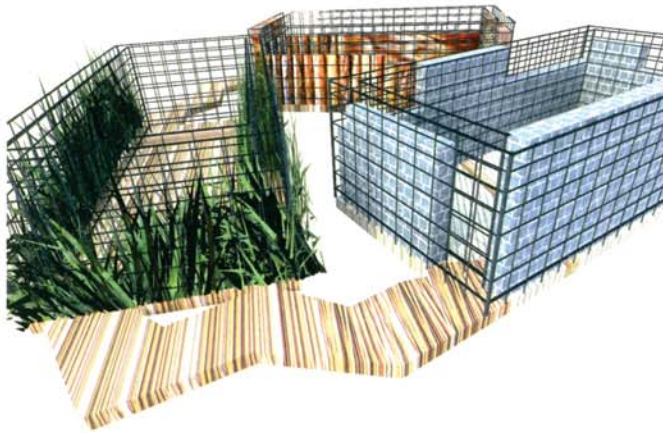
Road - sea/nature - industry



1. Sketches from the site



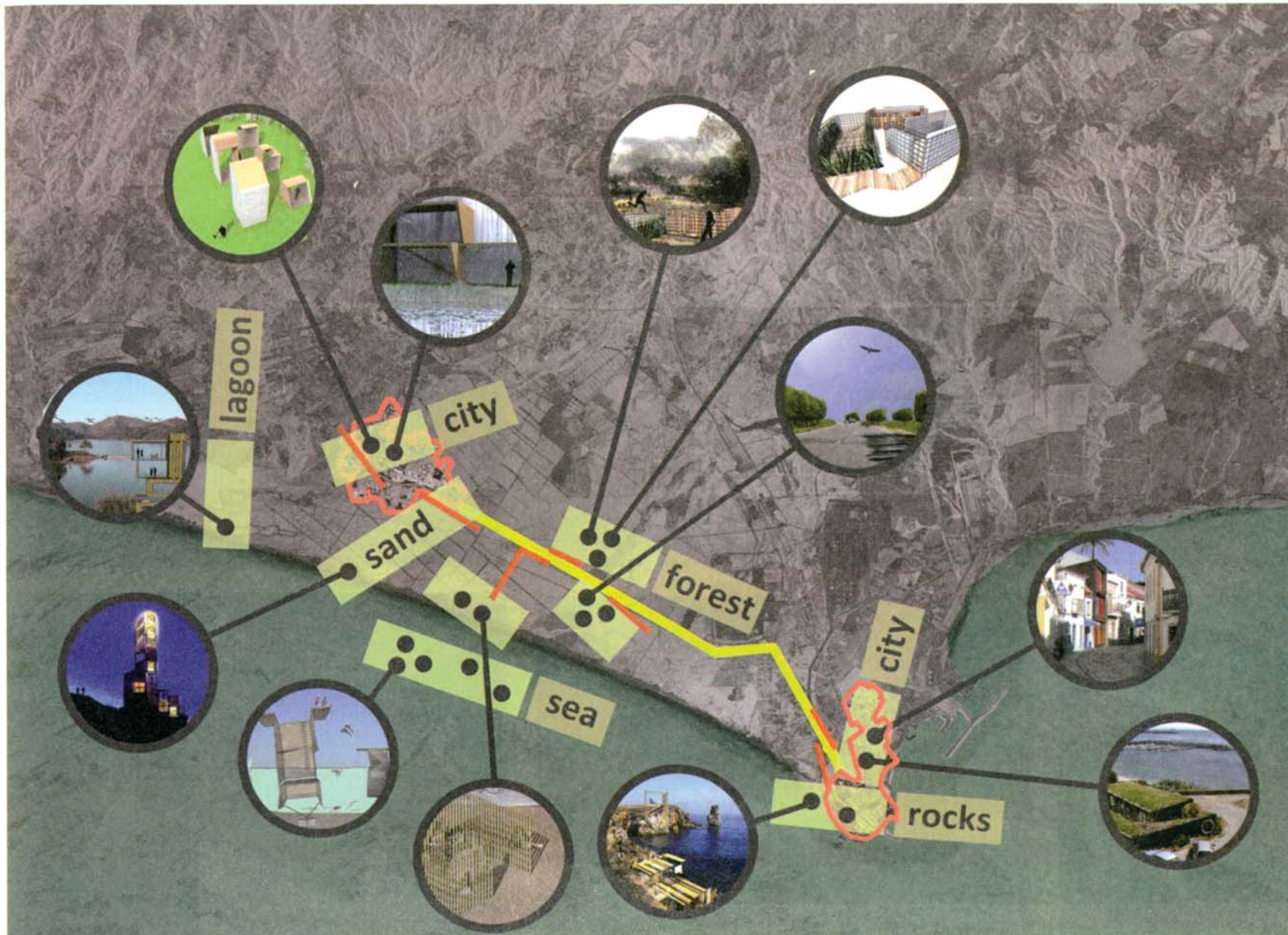
2. Concept



3. Cork structures



4. Cork forest

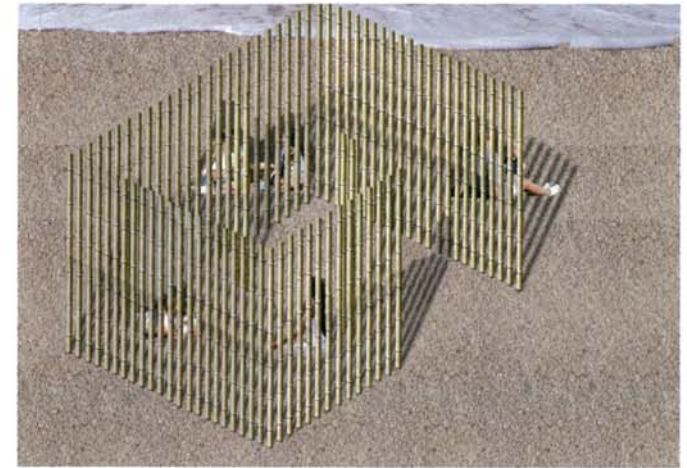


5. Masterplan

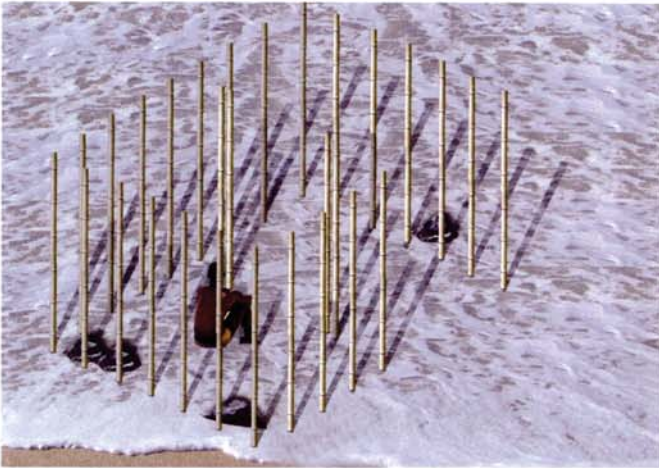
/Modular structure
/Linear and geometrical elements
/Natural materials
/Shadows play light
/Different grade of privacy



6. Container on the sand



7. Natural materials



8. Minimum impact on the context

Floating

Reformation of container to make furniture in the sea.

Floating in the sea, to take advantage of the seas

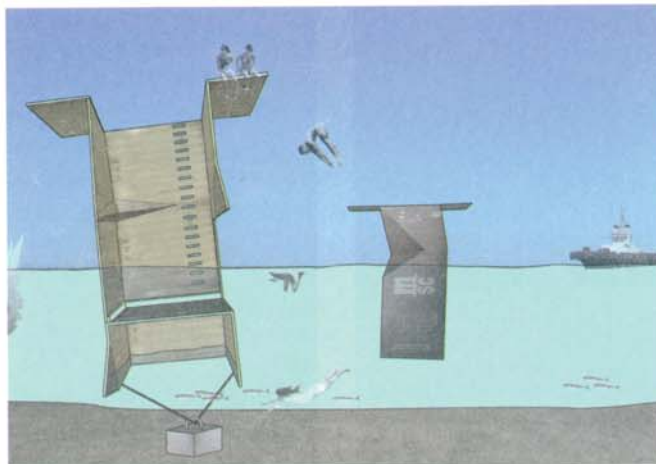
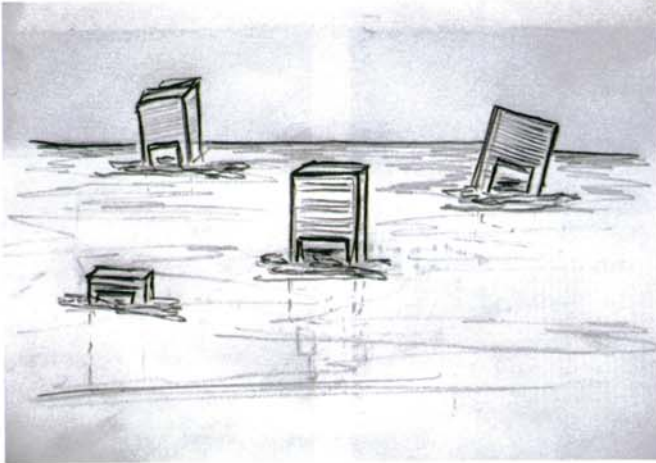
Movement, add interest to the coastline, tempt out to

A point.

Temporary as they can be drag out and back in again

By tugs.

Movement - static/sky - ground



9. Floating containers

Super protected nature

Each specific vegetation of the inbetween planted into

A container.

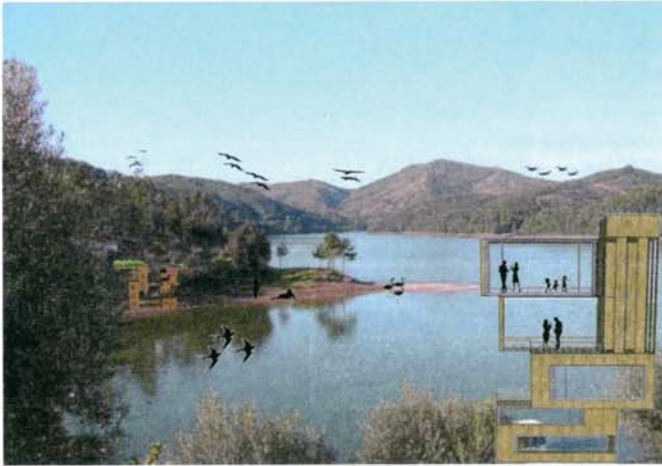
Floating in the lagoon, visible but not easily accessible.

Temporary in its fragility of the ecosystem.

Forest - shrubland/industry - nature



10. Floating contained ecosystems

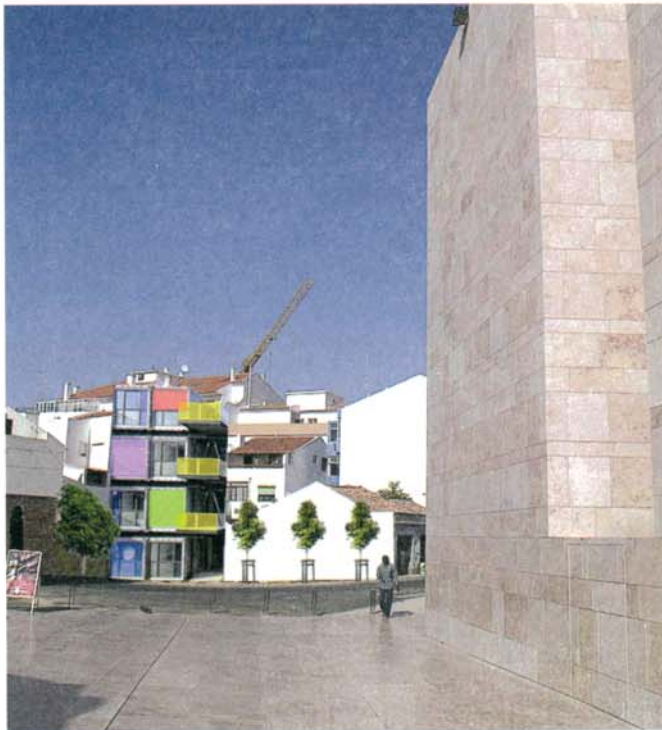


11. Observatories



Float Concept

- Preserve nature
- Connect human with nature
- Bird watching
- Local materials
- Harmony with nature
- Native flora



12. Insertion on the new part of the city



13. Insertion on the historical center

Floating

Reformation of container to make furniture in the sea.

Floating in the sea, to take advantage of the seas

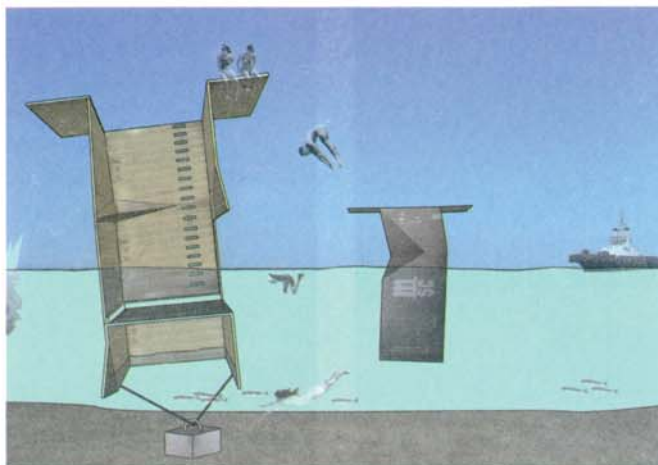
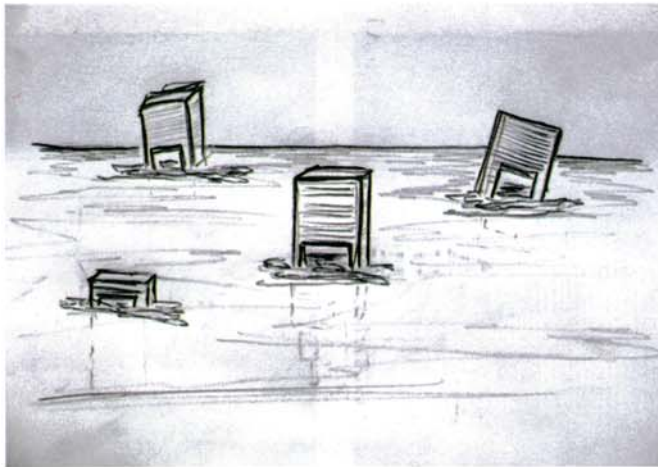
Movement, add interest to the coastline, tempt out to

A point.

Temporary as they can be drag out and back in again

By tugs.

Movement - static/sky - ground



9. Floating containers

Super protected nature

Each specific vegetation of the inbetween planted into

A container.

Floating in the lagoon, visible but not easily accessible.

Temporary in its fragility of the ecosystem.

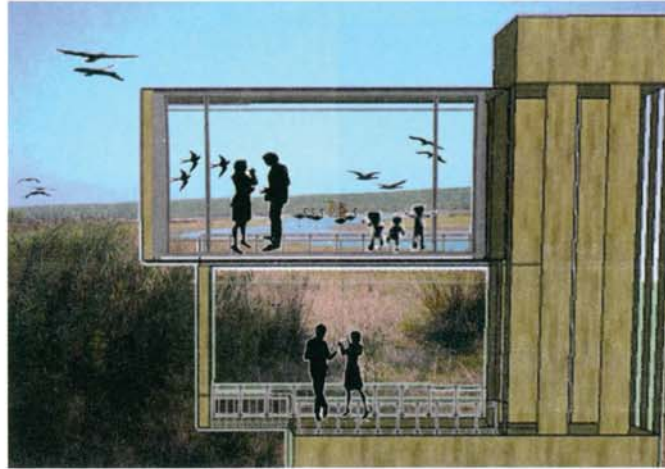
Forest - shrubland/industry - nature



10. Floating contained ecosystems

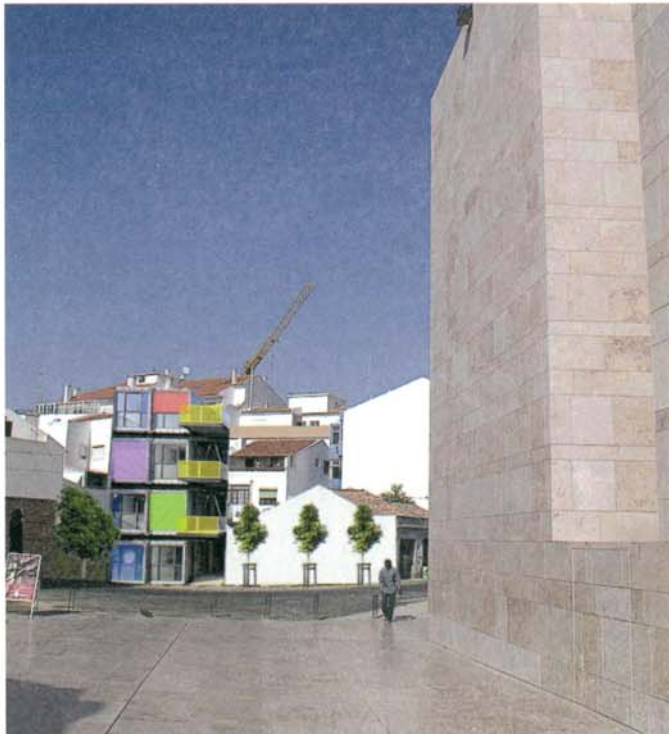


11. Observatories



Float Concept

- Preserve nature
- Connect human with nature
- Bird watching
- Local materials
- Harmony with nature
- Native flora



12. Insertion on the new part of the city



13. Insertion on the historical center



14. Structures on the rocks